



High Frequency Horn PH-3022

Applications

PH-3022 HIGH FREQUENCY HORN

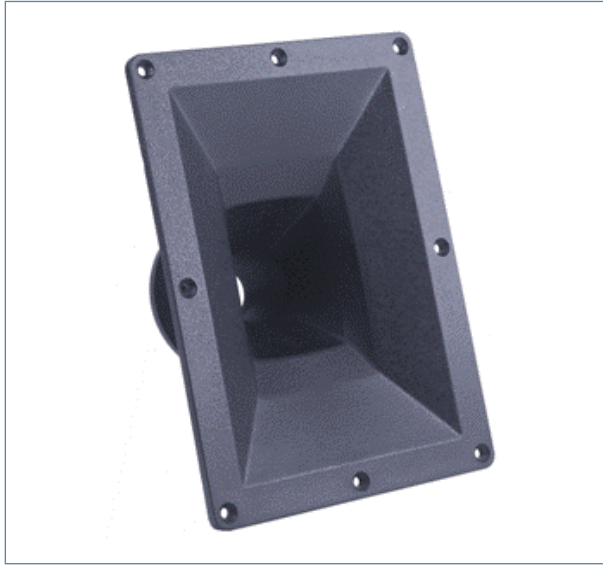
The P Audio PH-3022 is a wide bandwidth high frequency horn. The flat front design allows the PH-3022 to be used in modern professional sound reinforcement systems where a flat front system geometry is specified. The included angles of 60 degrees and 40 degrees make the horn a very high performance medium to long throw high frequency wave guide. The horn mouth is a rectangular geometry that allows the PH-3022 to be used in low profile system designs.

The PH-3022 features a 1.4 inch (35.5mm) diameter throat and is compatible with many of P Audio's PreNeo and BM-D series high performance compression drivers. The 1.4 inch throat geometry is an industry standard and this makes the horn compatible with many other compression drivers as well. This throat geometry also provides for controlled beamwidths at higher frequencies as well. The medium format mouth area provides excellent acoustic loading to below 1000Hz, making the horn ideal for wide range and low frequency crossover points.

The PH-3022 construction is a rugged glass filled ABS and is fully braced to provide excellent structural support to the mated compression driver. The horn mouth dimensions of 12.2 inches (310mm) by 8.9 inches (226mm) make the PH-3022 an ideal mate for both 12 inch low frequency woofers as well as 15 in woofers. The horn is an ideal choice for professional level two way system designs where medium to long throw is required and low profile vertical enclosure dimensions are required.

The PH-3022 may be used with the following P.audio professional compression drivers. (or any industry standard compatible driver)

- BM-D740
- PreNeo-740N



Specifications

Nominal Coverage Angle (H° X V°) - 6 dB	60° x 40°
Cut Off Frequency (Hz)	500 Hz
Throat Diameter	35.5mm (1.4")
Mounting Type	BOLT ON
Construction	Injected Polymer A.B.S with glass fiber filled Black Polycarbonate

MOUNTING DIMENSIONS :

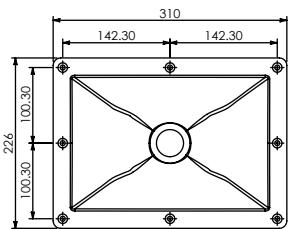
Rear Height :	182mm (7.2")
Rear Width	266mm (10.5")

OVERALL DIMENSIONS :

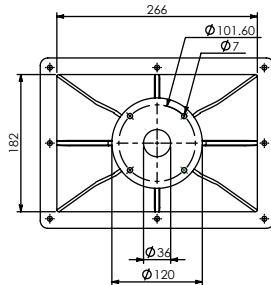
Mount Height :	226mm (8.9")
Mount Width :	310mm (12.2")
Length :	140mm (5.5")

BAFFLE CUTOOUT DIMENSION :

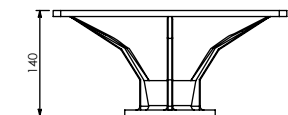
Height :	185mm (7.3")
Wigth :	270mm (10.6")
Net Weight	1.1kg (2.42 lbs)
Shipping Weight :	1.3kg (2.86 lbs)
Packing Dimension :	328mm x 238mm x 175mm 12.9" x 9.4" x 6.9"



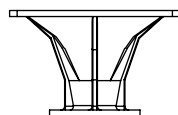
TOP VIEW



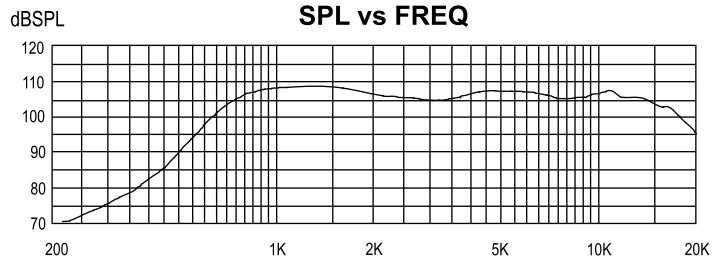
BOTTOM VIWE



FRONT VIEW



SIDE VIEW



Response of horn with PreNeo-740N

19/4 Moo 2 T.Bangkratuk A. Samparn Nakornpathom 73210 Thailand
 Tel: +66-2-441-6600 Auto 30 Lines
 e-mail: info@paudiothailand.com
 Web site: www.paudiothailand.com
 All rights reserved by P.Audio System Co., Ltd. 2007

